

# Renew-Crete® Systems

Innovative Products

For An Innovative Industry

**Colors Available In:**  
Colorhardner • Spray Coat  
Stamp Mix • Release Powder  
Color Wash • Curb Coat  
Counter Mix • Re-Coat • Roll Coat

RENEW-CRETE® COLORS



Ash



Beige



Ivory Sand §



Philly Blue † §



Shell White



Adobe Buff §



Light Rose



Green



Sable §



Sandstone



Flagstone Buff



Gray Slate



Gray Stone



Miami Buff



Canyon Tan



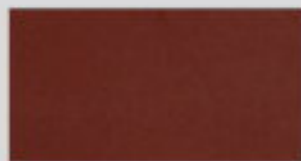
Red Taupe



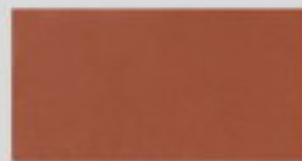
Silver Gray



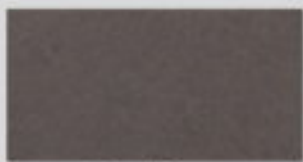
Phoenix Tan



Tile Red



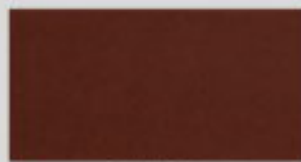
Saultillo Tile



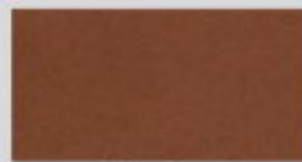
French Gray



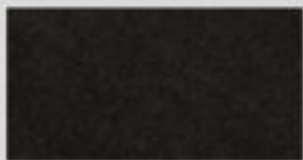
Autumn Brown



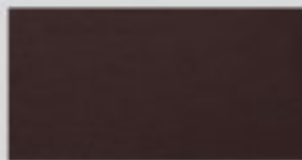
Brick Red



Terra Cotta



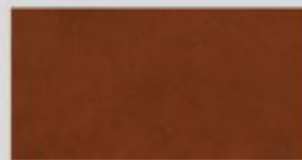
Charcoal



Walnut



Rustic Brown



Terra Cotta Light\*

\* Available in curb coat only unless special ordered

† Additional Cost for this color

§ Colors not available in release powder

Note: Color Selections in this brochure are approximations only and represent as closely as possible, in a printed version, the appearance of Renew-Crete products when cured and sealed using Renew-Crete High Gloss Sealer. Variations can be expected due to finishing techniques, lighting and jobsite conditions. If exact color is a concern, you should request an actual sample.

<http://www.renewcrete.com>

# Renew-Crete® Systems

## Innovative Products For An Innovative Industry



- Color Packs (CP):** Integral Iron Oxides specifically blended and weighed for uniform colors. These Color Packs are added to Renew-Crete **Light/Dark Base** Bag mixes to achieve the colors represented on the Renew-Crete® color chart.
- Colors Available: All colors except Terra Cotta Light
- Spray Coat (SC):** Premixed bag mixes used for spray and trowel applications usually no more than 1/8" thick per coat. No need for special additives or "activators", everything is included.
- Coverage: 80-160 sq. ft. depending on the specific application.
- Colors Available: Available in Light/Dark Base for use with Color Packs.
- Re-Coat (RC):** Premixed bag mixes used for resurfacing applications usually no more than 1/16" thick. No need for special additives or "activators", everything is included.
- Coverage: 150-200 sq. ft. per coat depending on the specific application and substrate.
- Colors Available: Available in Light/Dark Base for use with Color Packs and Neutral.
- Color Hardener (CH):** A blend of the highest grades of Portland cements, Iron Oxides and Silicas used for coloring fresh poured concrete prior to stamping. Renew-Crete® Colorhardener provides exceptional wear and impact resistance.
- Coverage: 80-120 Sq. Ft. per 60 Lb pail, depending on the color.
- Colors Available: All colors except Terra Cotta Light.
- Roll Coat (Roll):** Premixed bag mixes used for re-coloring of decorative concrete surfaces for applications usually no more than 1/32" thick per application. No need for special additives or "activators", everything is included
- Coverage: 150-250 sq. ft. per bag using a roller or commercial paint gun.
- Colors Available: Available in Light/Dark Base for use with Color Packs.
- Counter Mix (CM):** Concentrated premixed base mixes for use in manufacturing concrete countertops and slabs from 3/4 inch to 3 inches in thickness. Exceptional finishing characteristics and minimum set time make this the perfect choice for this application. May be used in either cast in place or pre-cast applications.
- Coverage: 6 Sq. Ft. @ 1.5 Inches and 4.5 Sq. Ft. @ 2 Inches.
- Colors Available: Available in Light/Dark Base for use with Color Packs. This product also works well with the Renew-Crete® Chemical Stains
- Concentrate Stamp Mix (SM):** Primarily used for Stamped overlay applications from 1/4 inch to 3/4 inches. This product weighs approximately 65% less freight than Stamp Mix Complete. Just add Color Packs, sand and water.
- Coverage: 70 sq. ft. per 40 Lb bag @ 1/4 inch, 57 Sq. Ft @ 5/16 inch and 45 sq. ft at 3/8 inch thick.
- Colors Available: Available in Light/Dark Base for use with Color Packs.
- Powder Release (RA):** A Pre-Colored Release agent used primarily in stamping fresh concrete, which keeps the stamping tools from sticking to the fresh concrete.
- Coverage: 1000 sq. ft. per 30 Lb. Pail.
- Colors Available: Available in all colors except: Sable, Ivory Sand, Terra Cotta Light, and Adobe Buff.
- Curb Coat (CC):** A Concentrated blend of the highest grades of Portland cements, Iron Oxides and Silica's used for coloring fresh Concrete Curbing prior to stamping. Add only sand and water.
- Coverage: 150-250 Lineal. Ft. per 50 Lb Pail
- Colors Available: All colors.
- Color Wash (CW):** A Renew-Crete® exclusive water based antiquating system used to add highlights to most types of decorative concrete. Can be used as a single color or multiple color application.
- Coverage: 1500 - 2000 Sq. Ft. per 10 Lb bag depending on application rate
- Colors Available: All colors.

